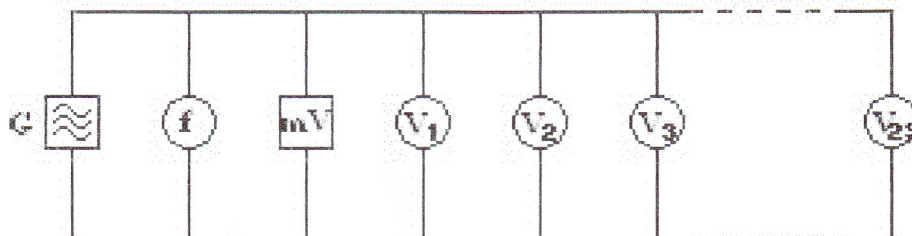


## Protokol 2/4

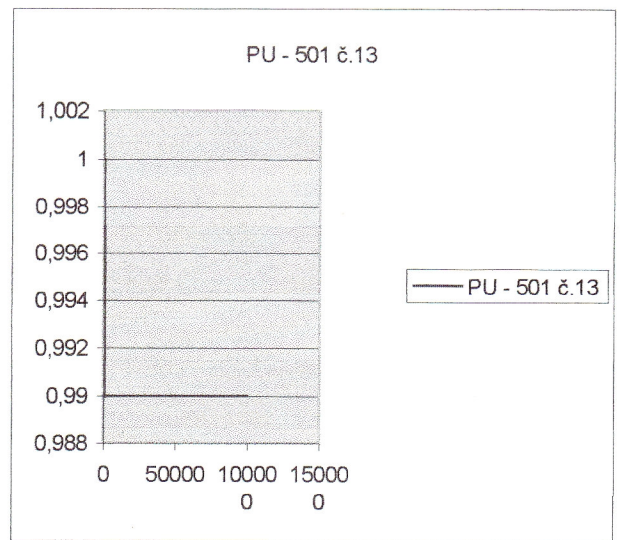
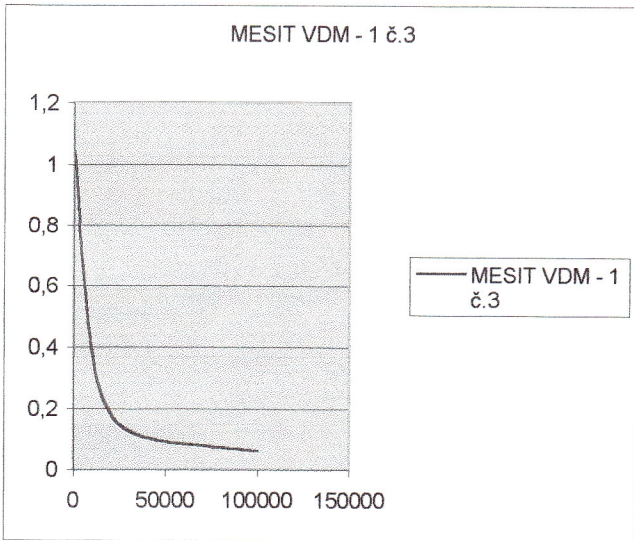
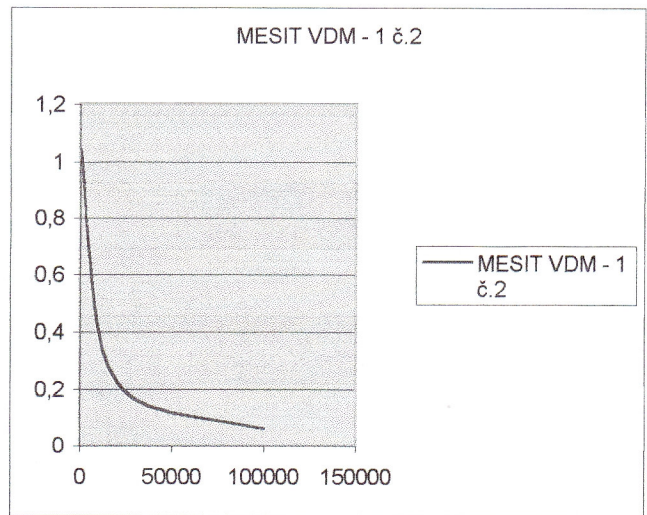
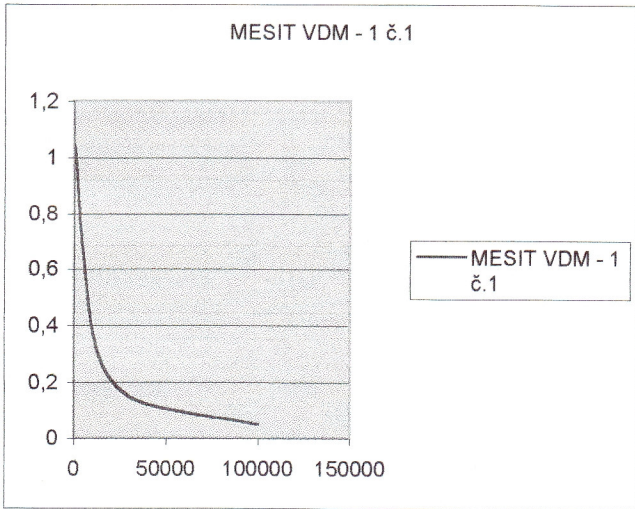
### Meranie frekvenčnej závislosti meracích prístrojov

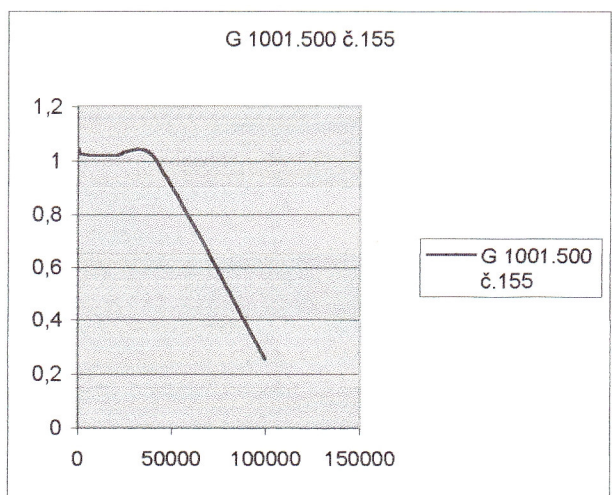
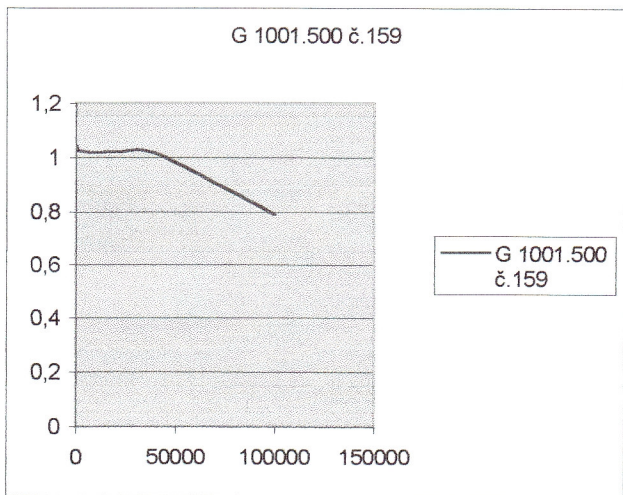
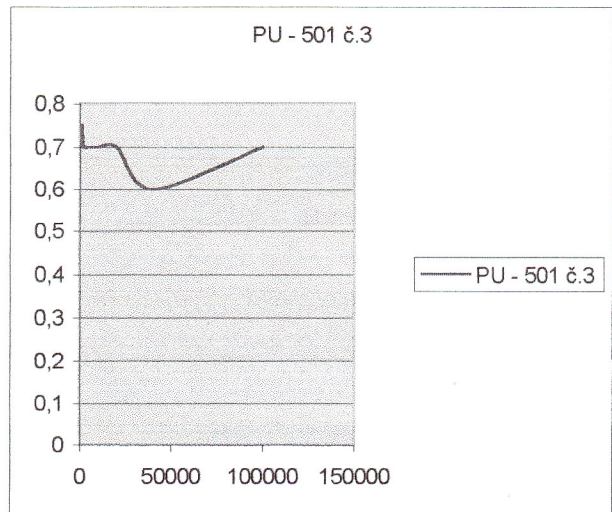
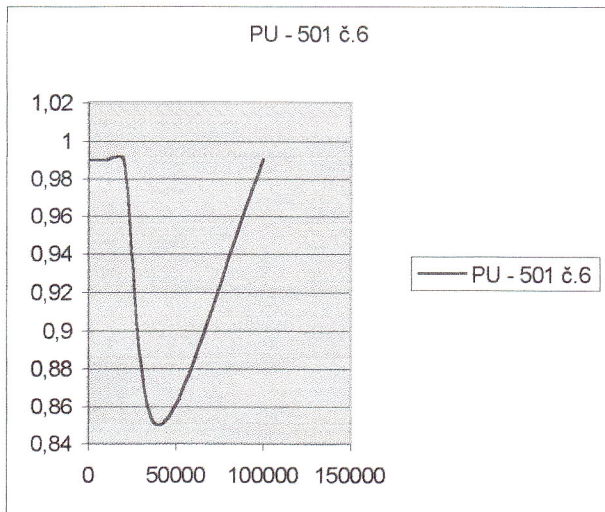
Schéma zapojenia:



#### Úloha cv. 4

typ prístroja: multimeter DMM - 3900								
frekvencia (Hz)	č. 1	č. 2	č. 3	č. 4	č. 5	č. 6	č. 7	č. 8
20	1,031	1,03	1,028	1,03	1,03	1,033	1,034	1,03
40	1,036	1,036	1,037	1,037	1,037	1,038	1,043	1,036
100	1,038	1,038	1,039	1,039	1,04	1,04	1,045	1,039
200	1,038	1,039	1,04	1,04	1,042	1,042	1,046	1,039
400	1,039	1,04	1,041	1,04	1,044	1,045	1,048	1,04
1000	1,027	1,028	1,03	1,027	1,035	1,038	1,042	1,029
2000	1,04	1,041	1,045	1,041	1,053	1,058	1,064	1,045
4000	1,086	1,086	1,098	1,088	1,104	1,118	1,122	1,1
10000	1,235	1,225	1,263	1,236	1,255	1,287	1,281	1,262
20000	1,315	1,297	1,359	1,315	1,34	1,381	1,367	1,35
40000	1,254	1,241	1,318	1,257	1,304	1,34	1,314	1,304
100000	0,874	0,899	0,993	0,893	0,957	1,036	0,957	0,984
hraničná hodnota (kHz)	4,33	4,33	3,96	4,22	3,67	3,32	3,16	3,89

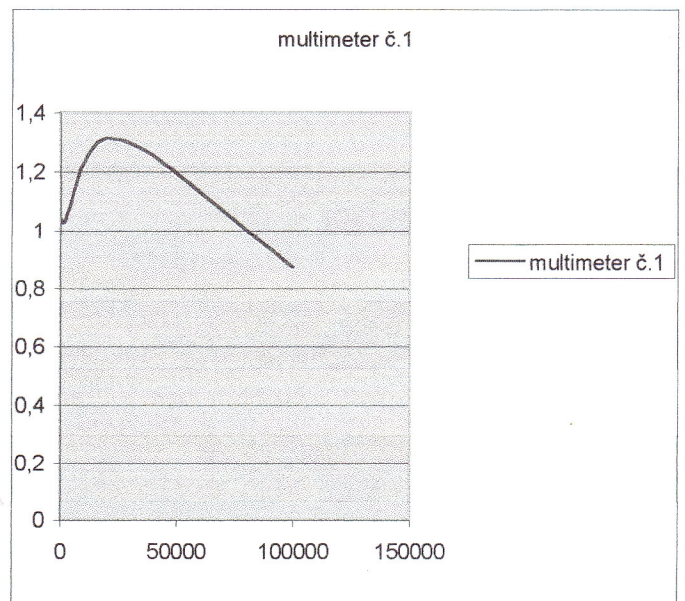
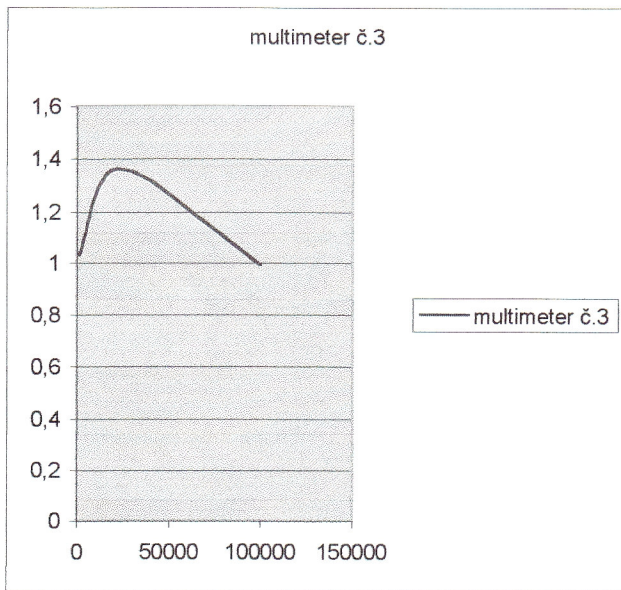
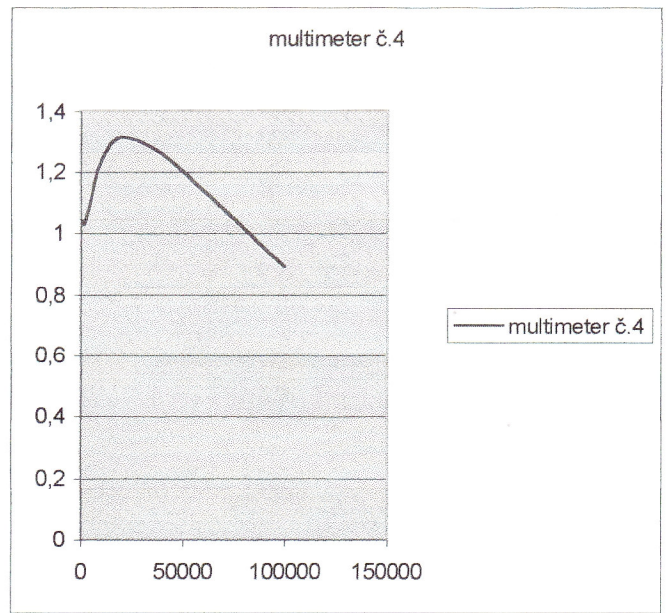
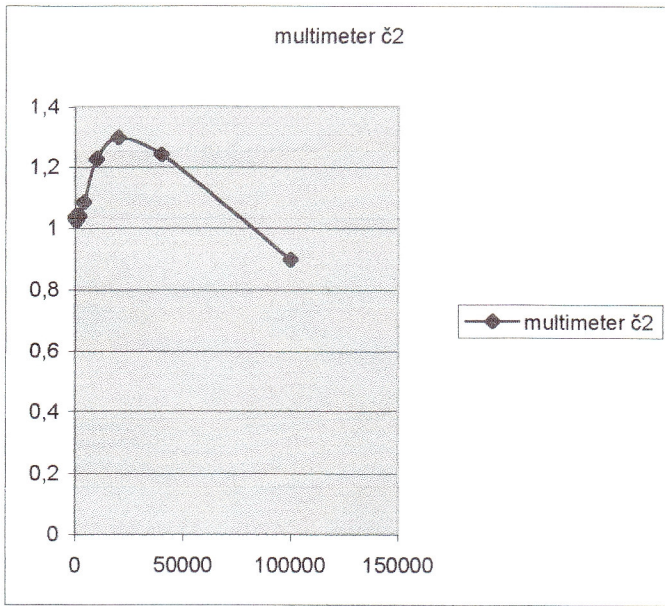




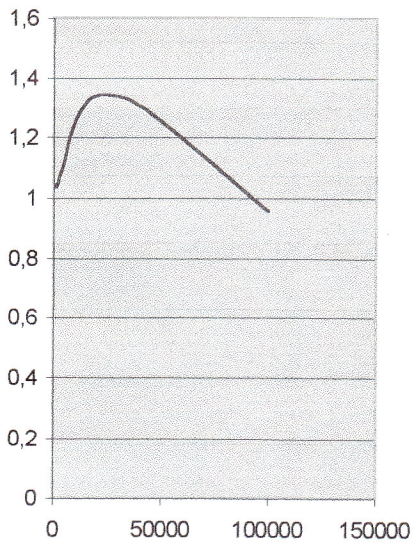
typ prístroja: multimeter DMM - 3900							
frekvencia (Hz)	č. 9	č. 10	č. 11	č. 12	č. 13	č. 14	č. 15
20	1,025	1,037	1,031	1,031	1,029	1,031	1,03
40	1,034	1,044	1,038	1,037	1,036	1,037	1,04
100	1,037	1,045	1,041	1,04	1,038	1,039	1,042
200	1,038	1,046	1,043	1,04	1,038	1,04	1,043
400	1,038	1,047	1,047	1,041	1,039	1,041	1,044
1000	1,029	1,037	1,039	1,03	1,029	1,029	1,033
2000	1,048	1,056	1,058	1,046	1,046	1,045	1,049
4000	1,11	1,121	1,111	1,097	1,102	1,098	1,102
10000	1,31	1,331	1,266	1,25	1,28	1,26	1,266
20000	1,451	1,478	1,351	1,331	1,387	1,342	1,338
40000	1,466	1,496	1,303	1,284	1,359	1,304	1,324
100000	1,292	1,319	0,975	0,972	1,072	0,974	1,039
hraničná hodnota (kHz)	3,62	3,31	3,44	3,95	3,86	4,04	4,88

typ prístroja	G 1004.500		FERM MM - 960			
frekvencia (Hz)	28	29	1	2	3	4
20	1,026	1,027	1,039	1,038	1,036	1,034
40	1,038	1,036	1,042	1,041	1,041	1,037
100	1,038	1,036	1,041	1,041	1,042	1,039
200	1,038	1,035	1,04	1,041	1,042	1,039
400	1,037	1,033	1,041	1,042	1,042	1,039
1000	1,019	1,009	1,028	1,03	1,03	1,028
2000	1,018	1,05	1,041	1,047	1,047	1,044
4000	1,014	1	1,092	1,109	1,107	1,107
10000	1,01	0,997	1,275	1,322	1,313	1,329
20000	0,999	0,985	1,406	1,468	1,444	1,492
40000	0,952	0,938	1,378	1,44	1,41	1,482
100000	0,714	0,698	0,993	1,053	1,022	1,116
hraničná hodnota (kHz)	59,6	55,7	—	—	—	—

typ prístroja	MESIT VDM - 1			PU - 501			G 1001.500	
frekvencia (Hz)	1	2	3	1	3	6	155	159
20	1,045	1,032	1,039	1	0,75	0,99	1,026	1,025
40	1,044	1,042	1,042	1	0,75	0,99	1,04	1,039
100	1,042	1,043	1,042	1	0,7	0,99	1,042	1,041
200	1,041	1,041	1,039	1	0,7	0,99	1,042	1,041
400	1,036	1,037	1,035	1	0,7	0,99	1,042	1,042
1000	0,991	0,996	0,992	0,99	0,75	0,99	1,025	1,025
2000	0,912	0,928	0,919	0,99	0,7	0,99	1,024	1,024
4000	0,72	0,747	0,732	0,99	0,7	0,99	1,021	1,021
10000	0,388	0,415	0,384	0,99	0,7	0,99	1,019	1,018
20000	0,21	0,231	0,186	0,99	0,7	0,99	1,02	1,019
40000	0,121	0,137	0,103	0,99	0,6	0,85	1,016	1,016
100000	0,051	0,061	0,06	0,99	0,7	0,99	0,252	0,791
hraničná hodnota (kHz)	2,3	2,5	2,35	—	—	—	71,8	100,3

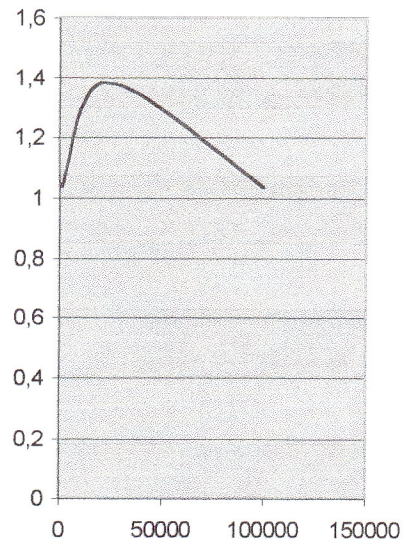


multimeter č.5



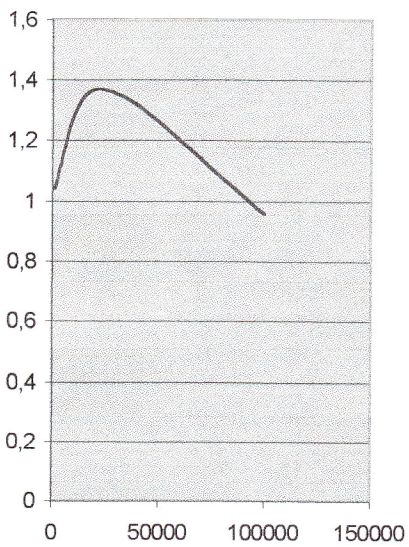
— multimeter č.5

multimeter č.6



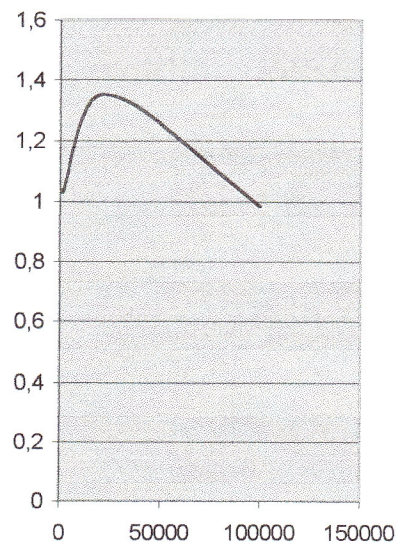
— multimeter č.6

multimeter č.7



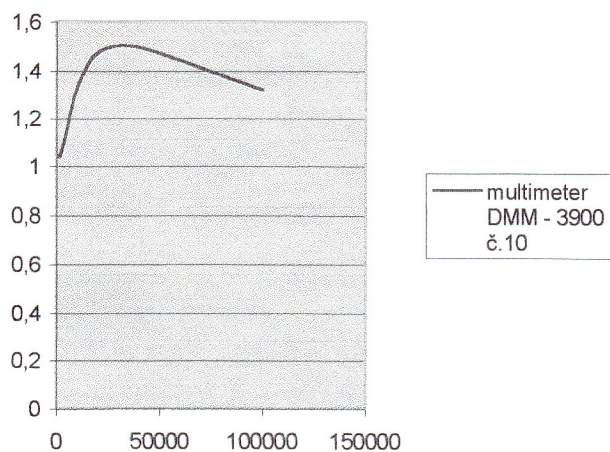
— multimeter č.7

multimeter č.8

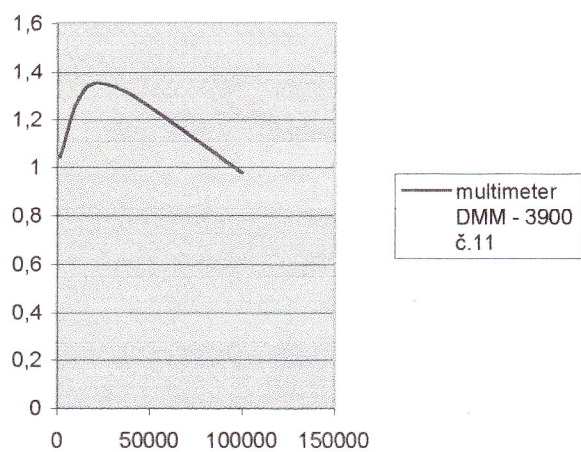


— multimeter č.8

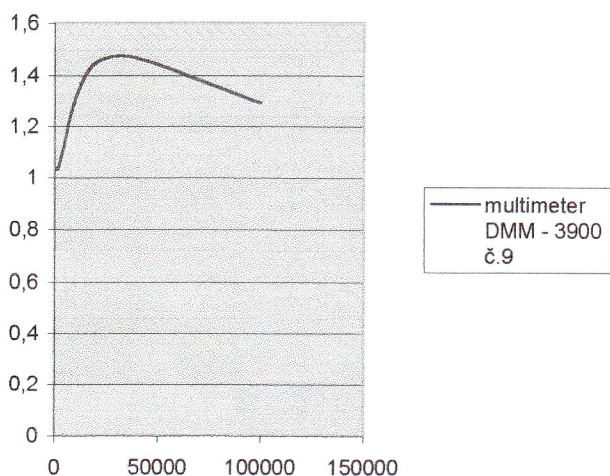
multimeter DMM - 3900 č.10



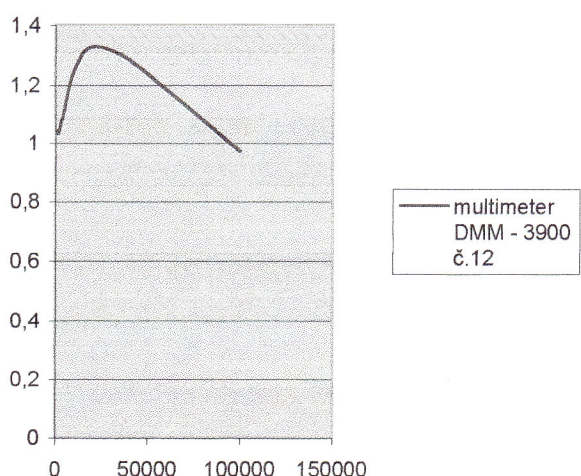
multimeter DMM - 3900 č.11



multimeter DMM - 3900 č.9

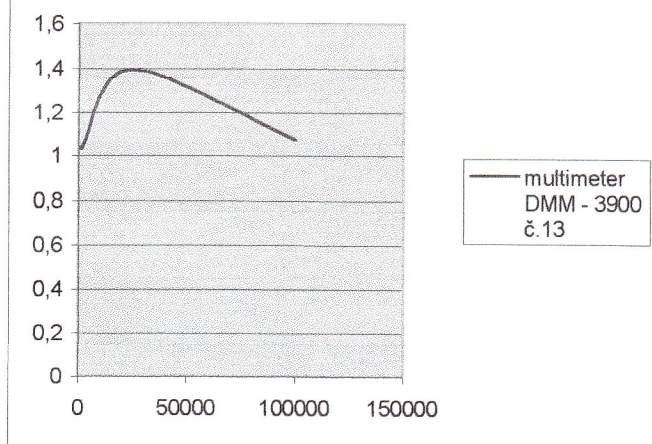


multimeter DMM - 3900 č.12

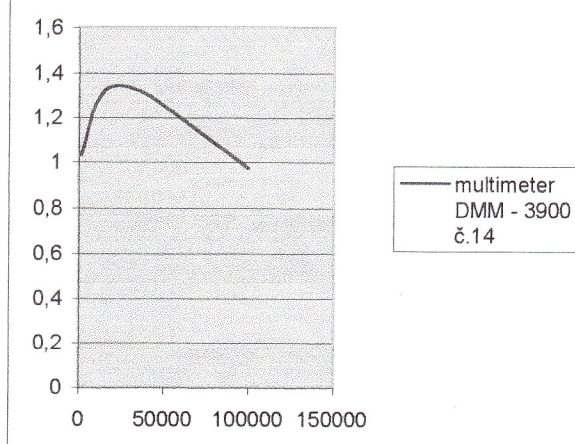




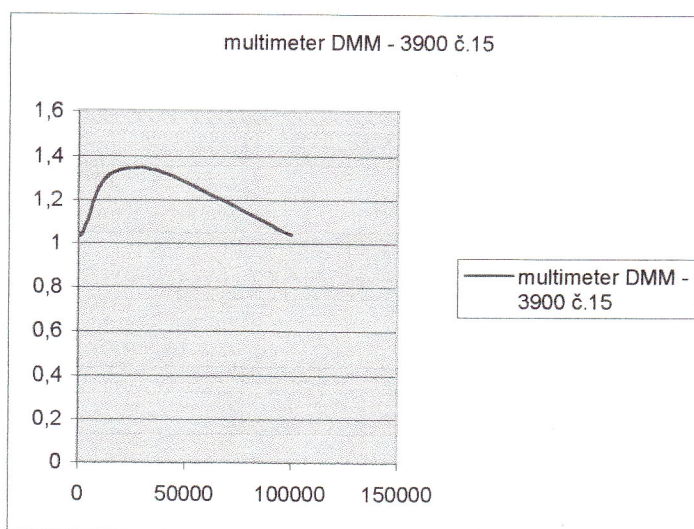
multimeter DMM - 3900 č.13

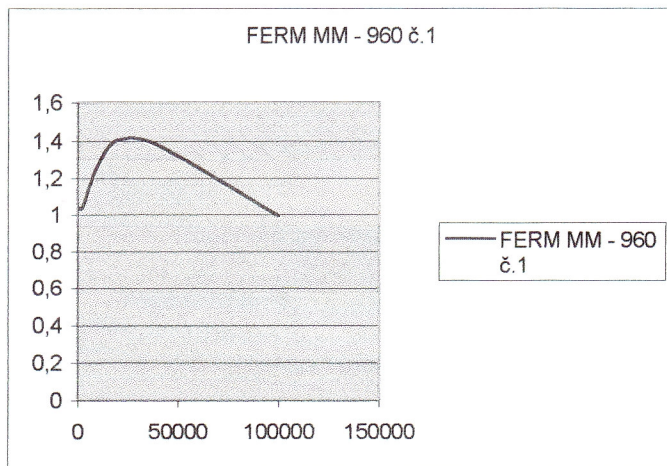
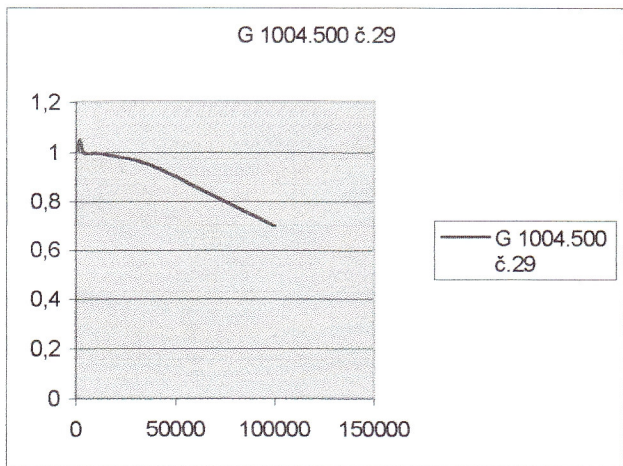
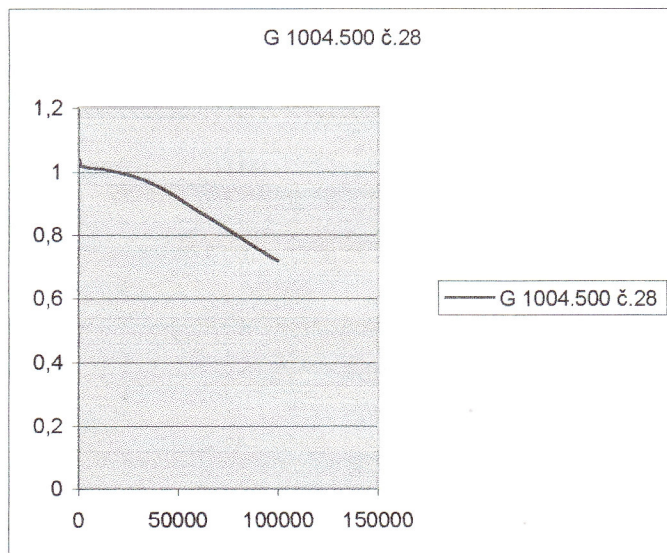
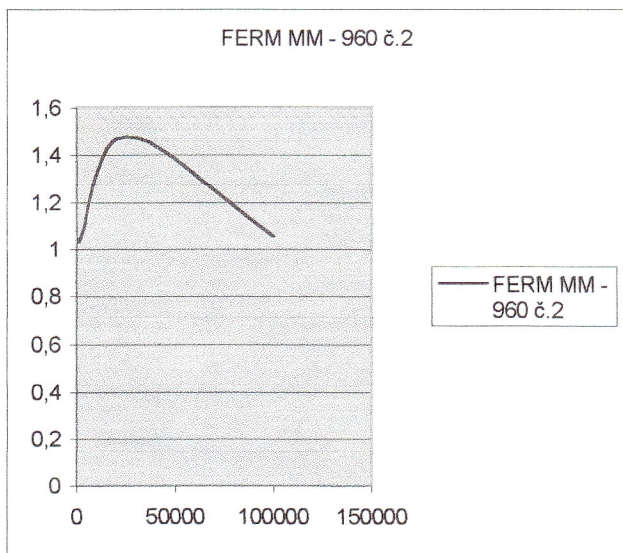


multimeter DMM - 3900 č.14

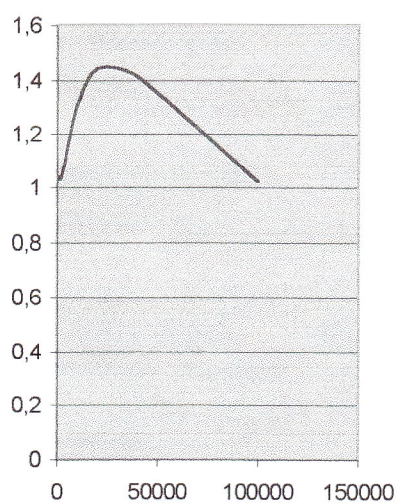


multimeter DMM - 3900 č.15



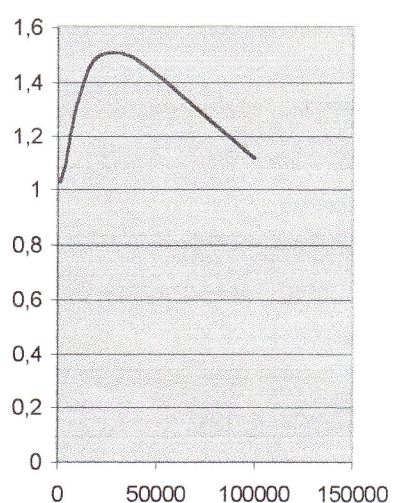


FERM MM - 960 č.3



— FERM MM - 960  
č.3

FERM MM - 960 č.4



— FERM MM -  
960 č.4