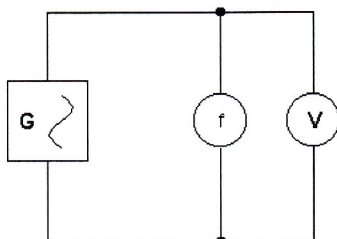


Frekvenčná závislosť meracích prístrojov

Úloha cvičenia:

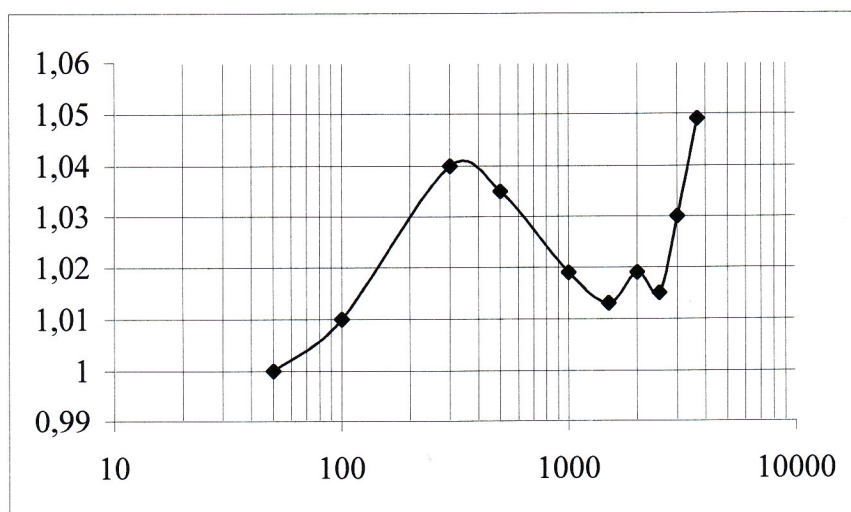
1. Zmerajte frekvenčnú závislosť všetkých typov MP – napätia v laboratóriu
2. Meranie vykonajte pre každý prístroj do frekvencie kedy nastane zmena ± 5 alebo 10% z východiskovej hodnoty.
3. Zhotovte frekvenčné charakteristiky.

Schéma zapojenia:



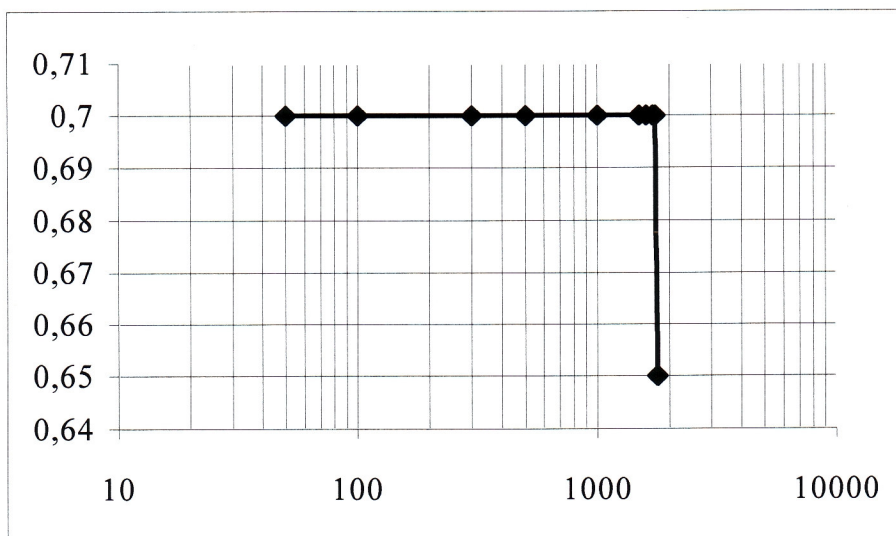
Ferm MM-960 ($\pm 5\%$)

n	1	2	3	4	5	6	7	8	9	10
f[Hz]	50	100	300	500	1000	1500	2000	2500	3000	3670
U[V]	1	0,99	1,01	1,04	1,035	1,019	1,013	1,015	1,03	1,049



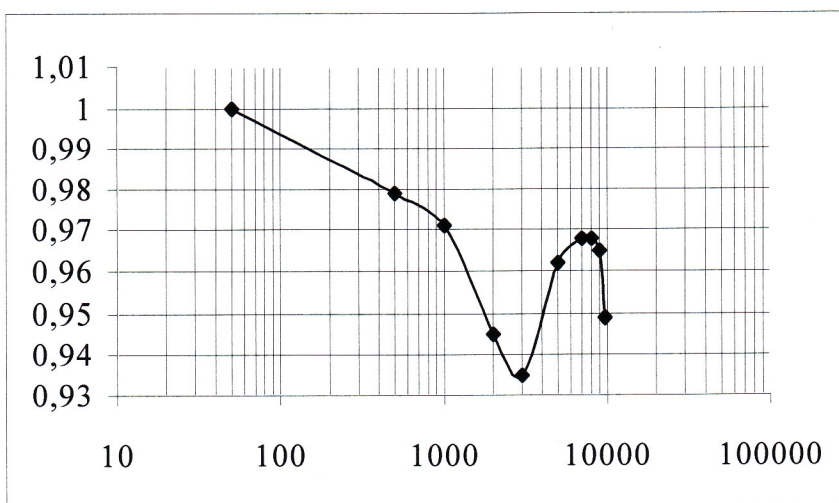
RTO-1035N ($\pm 5\%$)

n	1	2	3	4	5	6	7	8	9	10
f[Hz]	50	100	300	500	1000	1500	1600	1700	1750	1788
U[V]	0,7	0,7	0,7	0,7	0,7	0,7	0,7	0,7	0,7	0,65



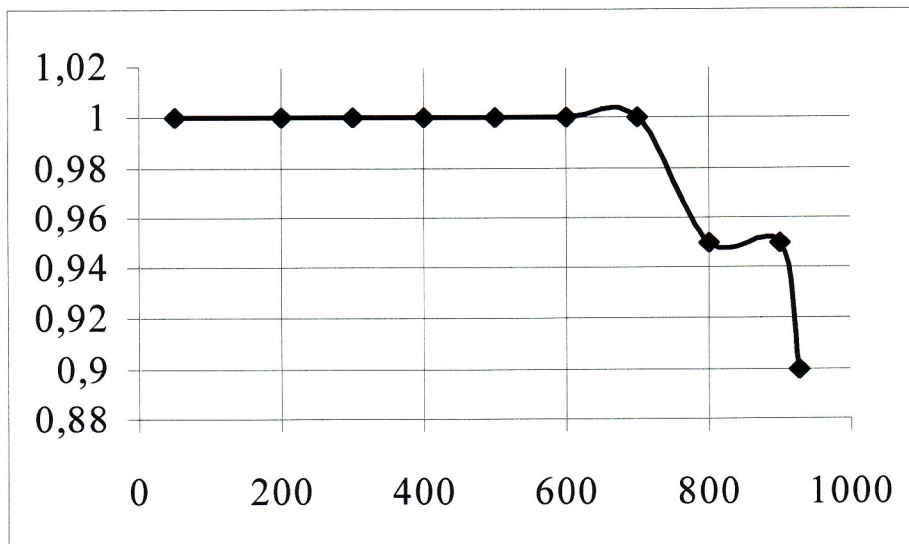
Multimeter G 1004.500 ($5\pm$)

n	1	2	3	4	5	6	7	8	9	10
f[Hz]	50	500	1000	2000	3000	5000	7000	8000	9000	9700
U[V]	1	0,979	0,971	0,945	0,935	0,962	0,968	0,968	0,965	0,949



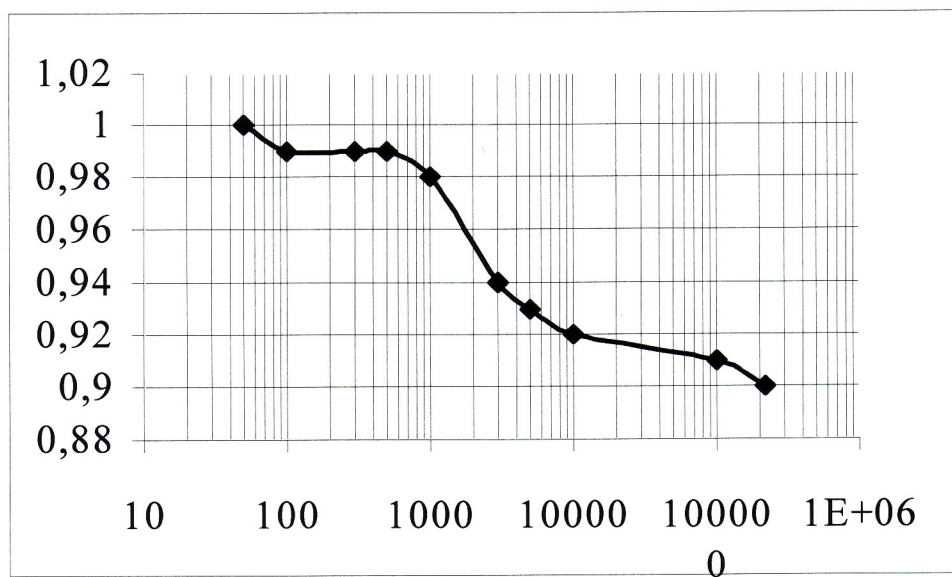
M 830 B (10±)

n	1	2	3	4	5	6	7	8	9	10
f[Hz]	50	200	300	400	500	600	700	800	900	927
U[V]	1	1	1	1	1	1	1	0,95	0,95	0,9



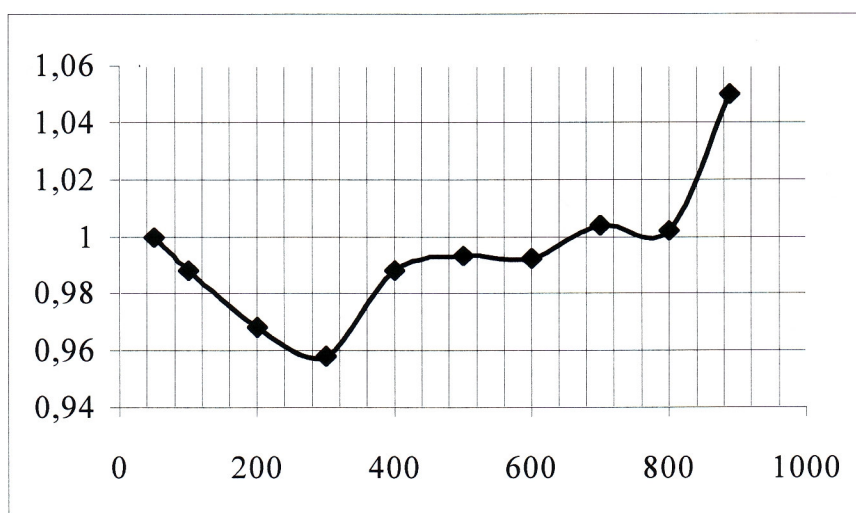
PU 501 (±10%)

n	1	2	3	4	5	6	7	8	9	10
f[Hz]	50	100	300	500	1000	3000	5000	10000	100000	219000
U[V]	1	0,99	0,99	0,99	0,98	0,94	0,93	0,92	0,91	0,9



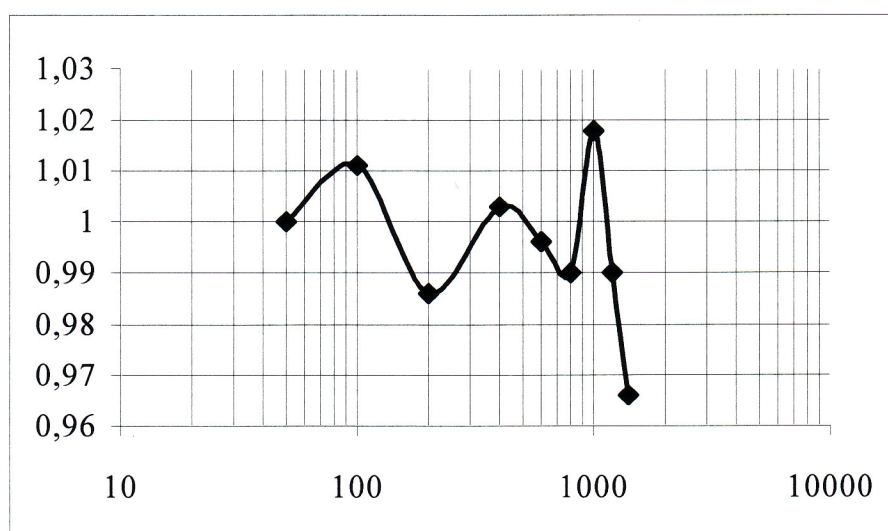
PU 510 ($\pm 5\%$)

n	1	2	3	4	5	6	7	8	9	10
f[Hz]	50	100	200	300	400	500	600	700	800	888
U[V]	1	0,988	0,968	0,958	0,988	0,993	0,992	1,004	1,002	1,05



VDM-1 ($\pm 5\%$)

n	1	2	3	4	5	6	7	8	9	10
f[Hz]	50	100	200	400	600	800	1000	1200	1400	1540
U[V]	1	1,011	0,986	1,003	0,996	0,99	1,018	0,99	0,966	0,95



PU 500 ($\pm 5\%$)

n	1	2	3	4	5	6	7	8	9	10
f[Hz]	50	150	300	400	500	700	900	1000	1200	1538
U[V]	1	1,02	0,98	1,01	1	1,02	0,935	0,96	0,965	0,95

